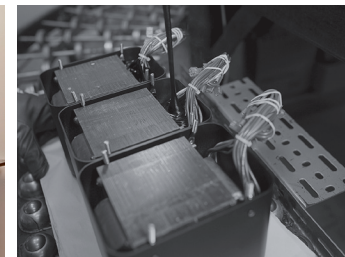


MA5300 integrated amplifier

- Delivers 100 Watts per channel into 8 Ohm speakers or 160 Watts per channel into 4 Ohm speakers. New dual scale blue Watt meters give an accurate readout of power output for both impedances.
- Includes 6 analog and 6 digital inputs, enough to connect virtually all source components.
- All digital inputs are housed in our DA1 Digital Audio Module which can be replaced by future modules as new digital audio technologies are developed.
- Supports high resolution digital music up to DSD256 and DXD 384kHz via an 8-channel, 32-bit/192kHz DAC used in Quad Balanced mode.
- Features our new McIntosh Monogrammed Heatsinks™, powerful new control microprocessors and some of the latest audio-grade circuit components.
- Full of numerous McIntosh technologies including Power Guard®, Sentry Monitor™, Home Theater PassThru, bass and treble tone controls, High Drive headphone amplifier with Headphone Crossfeed Director (HXD®) and Power Control.



Big Sound can come in Small Packages

McIntosh®

LEGENDARY PERFORMANCE™

www.mcintoshlabs.com

MA5300 integrated amplifier

Power Output:

100 Watts per channel into 8 Ohm speakers or
160 Watts per channel into 4 Ohm speakers.

Total Harmonic Distortion:

0.005% maximum from 20Hz to 20kHz

Tone Controls:

Bass and Treble

Headphone Amplifier:

1/4" High Drive with Headphone Crossfeed
Director (HXD®). Powers all headphones
from 20 to 600 Ohms.

Analog Inputs:

4 Unbalanced
1 Balanced
1 Moving Magnet

Digital Inputs:

2 Coax
2 Optical
1 USB
1 MCT (used with McIntosh MCT series
SACD/CD Transports)
All are housed in DA1 Digital Audio Module.

Home Theater PassThru:

Allows for seamless interfacing with a
Home Theater system.

Overall Dimensions (W x H x D):

17-1/2" (44.5cm) x 6" (15.24cm)
x 22" (55.88cm) including knobs,
connectors and cables

Weight:

38 lbs (17.2kg) net,
55.5 lbs (25.2kg) in shipping carton

For the Consumer's Protection:

In order to ensure the highest level of customer
satisfaction, new McIntosh products may only be
purchased from an Authorized McIntosh Dealer;
and, with certain limited exceptions may only be
purchased over-the-counter or delivered and
installed by the Authorized McIntosh Dealer.
McIntosh does not warrant, in any way, products
that are purchased from anyone who is not an
Authorized McIntosh Dealer, or that have had their
serial numbers altered or defaced.



Companion Products

The MCD350 SACD/CD Player, MCT450 SACD/CD Transport, MR87 AM/FM Tuner, MB100 Media Bridge, MB50 Streaming Audio Player and XR50 Bookshelf Loudspeakers are logical companions for the MA5300 Integrated Amplifier. Your Authorized Dealer can provide additional information on other McIntosh product combinations.

To learn more, please call us at 1.800.538.6576.

McIntosh®

LEGENDARY PERFORMANCE™

www.mcintoshlabs.com