



OBSESSED WITH HIGH RESOLUTION

## KF92 SUBWOOFER

### Discover the detail in the deep

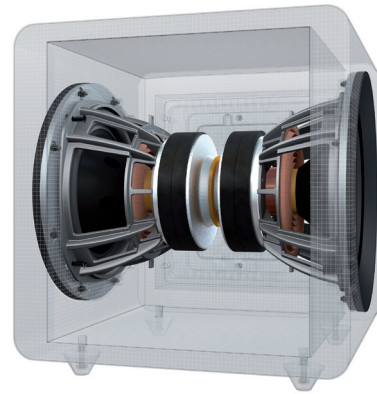
Music and film has never been so deep, and subwoofers are increasingly becoming a necessity to deliver lower notes, often at high volume. However, a high-quality subwoofer should add much more than just loudness and depth.

When KEF engineers designed KF92, they did so with the same goal as our award-winning loudspeakers – to recreate the recorded sound as faithfully as possible. Lightning quick articulation and immense power combines with a dual driver, force cancelling configuration to provide more depth, more dynamics and more detail, uncovering everything. Whether adding body to a double bass, or impact to a body-shaking explosion, KF92 ensures that you don't just feel the air move - you feel the sound move you.



## Drive

KF92 features two 9-inch drivers, based on the design used for the R Series loudspeakers. The hybrid aluminium/paper cone driver boasts a huge motor system and voice coil with a vented design, and the resulting linearity and vanishingly low distortion ensures that every detail is uncovered no matter the volume. Depths of 11Hz and beyond are achieved with fluidity and scale, thanks to the highly optimised excursion characteristics.



## Balance

The two drivers are positioned in opposition to each other, in a force-cancelling design. This cancels out reactive forces and therefore minimising cabinet agitation. This configuration helps deliver sound pressure levels of 110dB; an immense amount of volume from such a small, sealed cabinet.

## Power

Power in a subwoofer is about so much more than making a big sound. The KF92's audiophile-quality 1000W of Class D amplification (a dedicated 500W amplifier for each driver) creates immense amounts of power, filling almost any domestic space. But they also deliver incredible levels of control, which improves timing accuracy and dynamic response, for a more detailed sound, closer to that heard in the studio.



## Intelligence

Part of KEF's acclaimed Music Integrity Engine (MIE), Intelligent Bass Extension (iBX) analyses the input signal and applies customised Digital Signal Processing (DSP) to optimise the relationship between the amplification, drivers and cabinet. As a result, KF92 can play deeper and with a greater handling of dynamics, no matter how quiet or loud you are listening

## Flexibility

KF92's MIE suite of DSP algorithms also features a powerful placement-dependant EQ section. Unprecedented flexibility of positioning allows for seamless integration of KF92 into any environment, from corner placement to cabinet-housing, through to apartment living.



## Design

KEF has been at the forefront of delivering cutting edge acoustic performance from domestic-friendly designs since 1961. KF92 is no different. The compact, sealed box construction improves flexibility of positioning as well as the speed and clarity of performance. The low profile, LSX/LS50W inspired heatsink also assists with positioning, whilst ensuring that the high performance electronics are kept in optimum conditions.

## Versatility

When paired with KEF's LS50W, R Series or beyond, KF92 integrates seamlessly, disappearing into both the soundstage and the environment. SmartConnect cleverly determines whether a mono or stereo input is being used and optimises the gain to ensure optimum performance. Speaker level inputs, a simple to use LFE mode, input crossover and line level output with high pass filter completes a feature set that allows KF92 to be used in any system installation with minimal fuss.

## Features:

- Twin, 9-inch force cancelling drive units
- iBX Intelligent Bass Extension: The DSP analyses your input signal and applies KEF's iBX, allowing the subwoofer to play louder and remain dynamic at any listening level
- 1000W (2x500W) Class D amplification
- Sealed box construction for a more accurate subwoofer; that is more flexible about placement
- Compact, space saving design with low profile, sculpted heatsink
- Exceptionally versatile controls allowing for easy integration with any loudspeaker and any home environment

## Specifications

Model	KF92
Design	Force cancellation
Driver units	2 x 9" drivers
Frequency Response ( $\pm 3$ dB)	11Hz – 200Hz
Max Output	110dB
Amplifier type	Built-in Class D
Amplifier power	1000W RMS (2 x 500W RMS)
Variable low pass filter	40Hz – 140Hz, LFE
Input	RCA phono sockets Speaker level inputs
Power requirements	100-240 V, 50/60Hz
Power consumption	1000W
Dimension (H x W x D) with rear panel and feet	352.4 x 330 x 360.5mm
Weight	20Kg



Visit: [KEF.com](https://www.kef.com) for more about KEF and its products.

KEF reserves the right, in line with continuing research and development, to amend or change specifications. E&OE.