



# IE 300

## High-end in-ear earphones



- EN Quick Guide
- DE Kurzanleitung
- JA 簡易説明書
- ZH 快速指南
- FR Guide rapide
- ES Instrucciones resumidas
- PT Guia rápido
- NL Beknopte handleiding
- IT Guida rapida

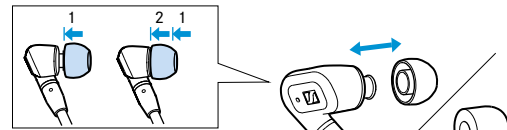
### SENNHEISER

Sennheiser electronic GmbH & Co. KG  
Am Labor 1, 30900 Wedemark, Germany

www.sennheiser.com

Publ. 11/20, 588576/A01

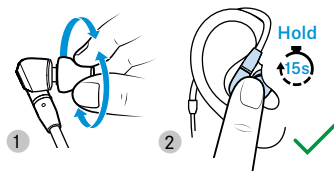
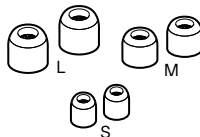
1. Selecting and replacing the ear adapters | Ohradapter wählen und austauschen | 耳用アダプターを選択し、交換する | 选择和更换耳塞 | Sélectionner et remplacer les adaptateurs d'oreille | Seleccionar y cambiar adaptadores para los oídos | Seleccionar e substituir os adaptadores auriculares | Ooradapters selecteren en vervangen | Scelta e sostituzione dei cuscinetti auricolari



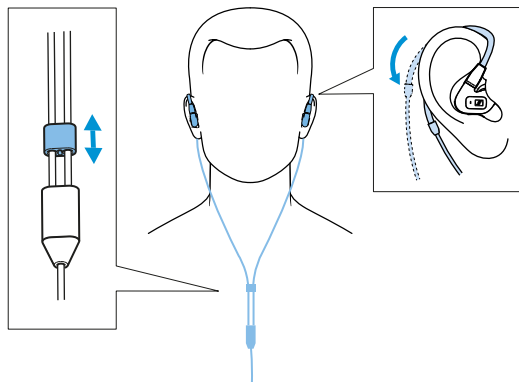
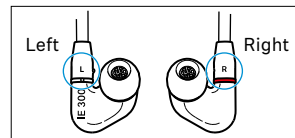
Silicone



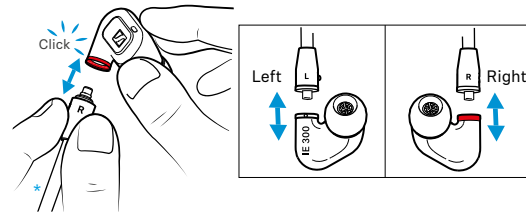
Memory foam



2. Inserting the earphones into your ears and optimal cable routing | Hörer in die Ohren setzen und optimale Kabelführung | ヘッドフォンの耳への取付および最適なケーブル配線 | 将耳机戴在耳朵里, 以最舒适的方式放置耳机线 | Insérer les écouteurs dans les oreilles et guidage optimal du câble | Colocarse los audífonos en los oídos y guía de cables óptima | Colocar os auriculares nos ouvidos e passagem de cabos ideal | Oortjes in de oren stoppen en optimale kabelgeleiding | Inserimento degli auricolari nelle orecchie e posizionamento ottimale dei cavi

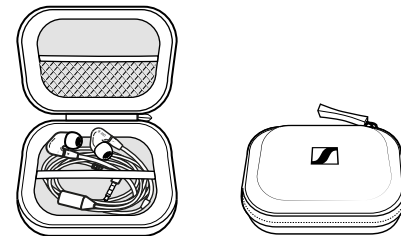


3. Replacing the cable | Kabel austauschen | ケーブルの交換 | 更换电缆 | Remplacer le câble | Cambiar el cable | Substituir o cabo | Kabel vervangen | Sostituzione del cavo

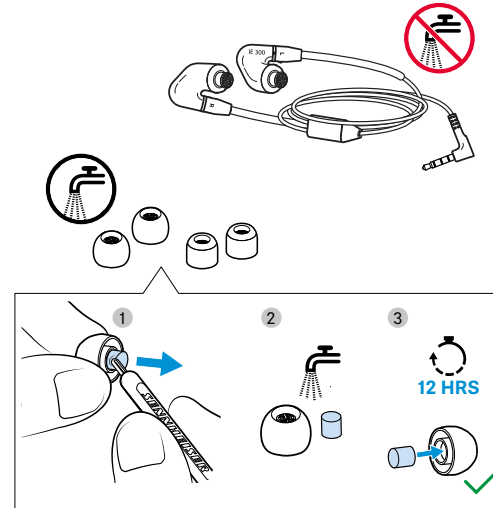


\* Optional available: Balanced stereo cable with 2.5 mm or 4.4 mm jack connector

4. Storing and transporting | Aufbewahren und transportieren | 保管と輸送 | 存放及移动 | Stockage et transport | Guardar y transportar | Guardar e transportar | Opbergen en vervoeren | Custodia e trasporto



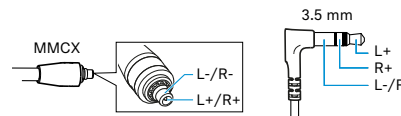
5. Cleaning | Reinigen | を掃除する | 清洁 | Nettoyage | Limpiar | Limpar | Schoonmaken | Pulizia



Specifications | Technische Daten | 技術データ | 技术参数 | Caractéristiques techniques | Datos técnicos | Dados técnicos | Technische specificaties | Dati tecnici

Transducer principle	dynamic, extra wide band (XWB)
Transducer size	7 mm
Frequency response	6 Hz to 20,000 Hz
Frequency characteristic	diffuse-field equalized
Ear coupling	In-ear, closed
Impedance	16 Ω
Sound pressure level	124 dB at 1 kHz, 1 Vrms
Total harmonic distortion	< 0.08 % (1 kHz, 94 dB)
Attenuation	-26 dB
Cable	oxygen-free copper cable (OFC), para-aramid reinforced, earhooks TPU-encased
Connector	gold-plated; earbud side: MMCX plug; device side: stereo jack plug, 3.5 mm, unbalanced, 3-pin
Weight (without cable)	approx. 4 g each earbud
Operating temperature	-10 °C to +55 °C
Maximum value of the static magnetic field at the surface	0.9 mT

Pin assignment | Steckerbelegung | プラグの配置 | 插头配置 | Brochage | Asignación de pines | Pinagem | Stekkeraansluitingen | Disposizione degli attacchi





# IE 300

High-end in-ear earphones



- DA Kort vejledning
- SV Snabbguide
- FI Pikaohje
- EL Συνοπτικές οδηγίες
- PL Krótka instrukcja obsługi
- TR Hızlı Kılavuz
- RU Краткая инструкция
- TW 快速使用指南
- KO 빠른 안내서
- ID Panduan ringkas

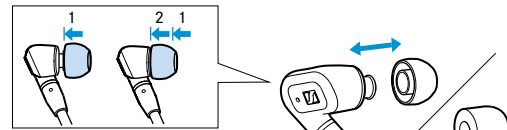
## SENNHEISER

Sennheiser electronic GmbH & Co. KG  
Am Labor 1, 30900 Wedemark, Germany

www.sennheiser.com

Publ. 11/20, 588576/A01

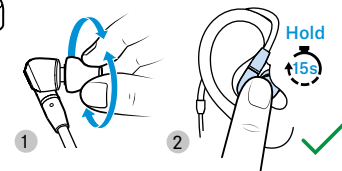
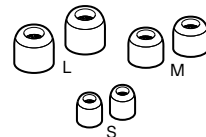
1. Valg og udskiftning af øreadaptere | Välja och byta öronadapterar | Korva-adapterien valinta ja vaihto | Επιλογή και αντικατάσταση μαξιλαριών αυτίο | Wybór i wymiana wkładek dousznych | Kulak adaptörlerinin seçilmesi ve değiştirilmesi | Выбор и замена ушных вкладышей | 選擇和更換耳塞 | 이어 어댑터 선택 및 교체 | Memilih dan mengganti adaptor telinga



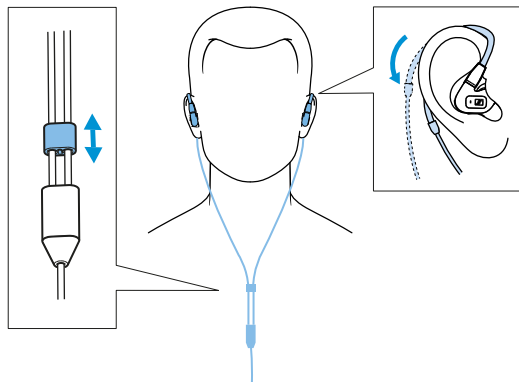
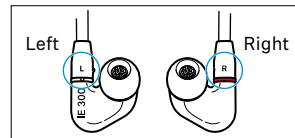
Silicone



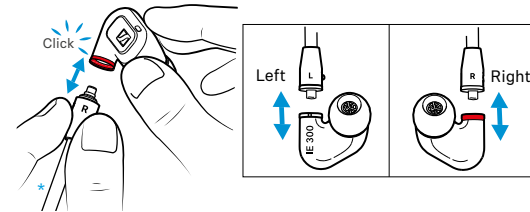
Memory foam



2. Isætning i ørerne og optimal kabelføring | Sätta in hörlurarna i öronen och optimal kabelföring | Kuulokkeiden asettaminen korviin ja kaapelin optimaalinen kulku | Τοποθέτηση ακουστικών στα αυτιά και βέλτιστη τοποθέτηση καλωδίου | Wkładanie słuchawek do uszu i optymalne prowadzenie kabla | Kulaklıkların kulaklara takılması ve en iyi kablo yerleşimi | Вставка наушников в уши и оптимальное расположение кабеля | 將耳機戴在耳朵裡，以最舒適的方式放置耳機線 | 귀에 이어폰 삽입 및 최적의 케이블 라우팅 | Pasang earphone pada kedua telinga dan pengarah kabel optimal

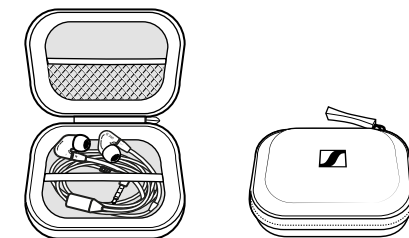


3. Udskiftning af kabler | Byta kabel | Kaapelin vaihto | Αντικατάσταση καλωδίου | Wymiana kabla | Kablonun değiştirilmesi | Замена кабеля | 更換電纜 | 케이블 교체 | Mengganti kabel

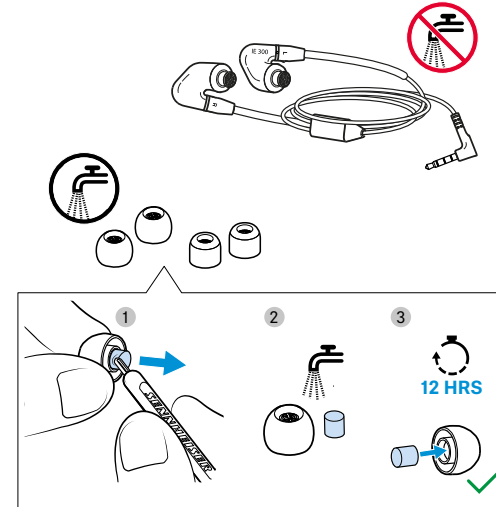


\* Optional available: Balanced stereo cable with 2.5 mm or 4.4 mm jack connector

4. Opbevaring og transport | Förvara och transportera | Säilytys ja kuljetus | Φύλαξη και μεταφορά | Przechowywanie i transport | Saklanması ve taşınması | Хранение и транспортировка | 存放及移動 | 보관 및 운반 | Menyimpan dan mengangkut



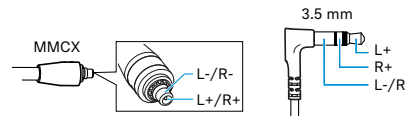
5. Rengøring | Rengöra | Puhdistus | Καθαρισμός | Czyszczenie | Temizleme | Очистка | 清潔 | 청소 | Membersihkan



Tekniske data | Tekniska data | Tekniset tiedot | Τεχνικά χαρακτηριστικά | Dane techniczne | Teknik Bilgiler | Технические характеристики | 技術參數 | 기술 데이터 | Data Teknis

Transducer principle	dynamic, extra wide band (XWB)
Transducer size	7 mm
Frequency response	6 Hz to 20,000 Hz
Frequency characteristic	diffuse-field equalized
Ear coupling	In-ear, closed
Impedance	16 Ω
Sound pressure level	124 dB at 1 kHz, 1 Vrms
Total harmonic distortion	< 0.08 % (1 kHz, 94 dB)
Attenuation	-26 dB
Cable	oxygen-free copper cable (OFC), para-aramid reinforced, earhooks TPU-encased
Connector	gold-plated; earbud side: MMCX plug; device side: stereo jack plug, 3.5 mm, unbalanced, 3-pin
Weight (without cable)	approx. 4 g each earbud
Operating temperature	-10 °C to +55 °C
Maximum value of the static magnetic field at the surface	0.9 mT

Stikkonfiguration | Kontaktschema | Pinnijärjestys | Αντιστοίχιση επαφών βύσματος | Układ pinów wtyków | Fiş bağlama düzeni | Разводка штекеров | 插頭配置 | 잭 할당 | Penempatan steker





# IE 300

High-end in-ear earphones



- ET Lühijuhend
- LV Īsā instrukcija
- LT Trumpoji naudojimo instrukcija
- CS Stručný návod k použití
- SK Stručný návod
- HU Rövid útmutató
- RO Instrucțiuni succinte
- BG Кратко ръководство
- SL Kratka navodila
- HR Kratke upute

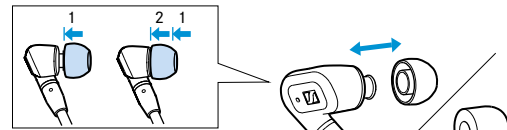
## SENNHEISER

Sennheiser electronic GmbH & Co. KG  
Am Labor 1, 30900 Wedemark, Germany

www.sennheiser.com

Publ. 11/20, 588576/A01

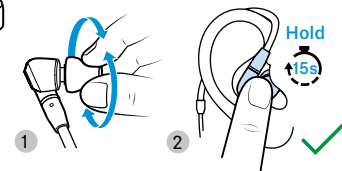
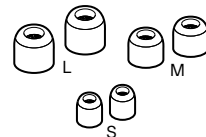
1. Kõrvaadapterite valimine ja vahetamine | Ausu adapteru izvēle un nomaināšana | Ausies adapterio pasirinkimas ir keitimas | Výběr a výměna náušního adaptéru | Výber a výmena ušného adaptéra | Füladapter kiválasztása és cseréje | Alegerea și înlocuirea adaptoarelor pentru urechi | Избор и смяна на адаптери за уши | Izbira in menjava ušesnih čepkov | Odabir i zamjena ušnog adaptera



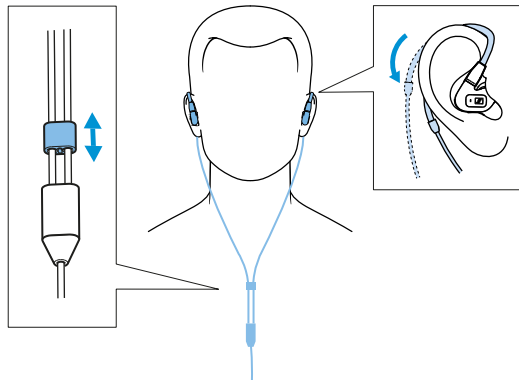
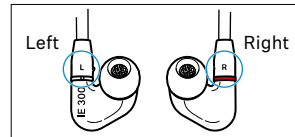
Silicone



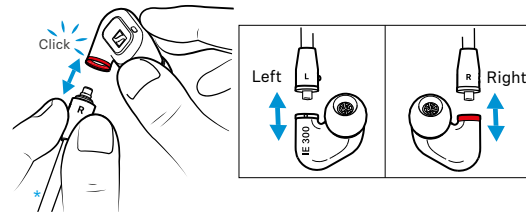
Memory foam



2. Kõrvaosade kõrva panemine ja kaabli optimaalne paigutus | Austiņu ielikšana ausīs un optimāla vada izvietošana | Ausinių įdėjimas į ausis ir optimalus kabelio valdymas | Vložení sluchátka do uší a optimální vedení kabelu | Vloženie slúchadiel do uší a optimálne vedenie kábla | A fülhallgató behelyezése a fülbe és optimális kábelvezetés | Introducerea căștilor în urechi și ghidarea optimă a cablului | Поставте слушалките в ушите си и прекарайте кабела оптимално | Vstavljanje slušalk v ušesa in najboljša napeljava kabla | Stavljanje slušalica u uši i optimalno polaganje kabla

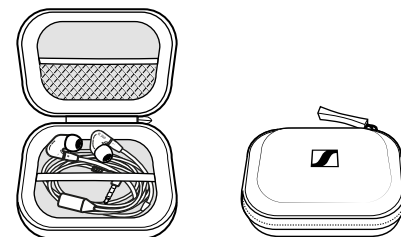


3. Kaabli vahetamine | Vada nomaināšana | Kabelio keitimas | Výměna kabelu | Výmena kábla | Kábel cseréje | Înlocuirea cablului | Смяна на кабел | Menjava kabla | Zamjena kabla

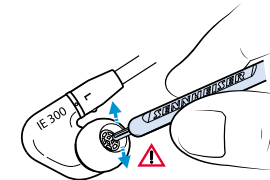
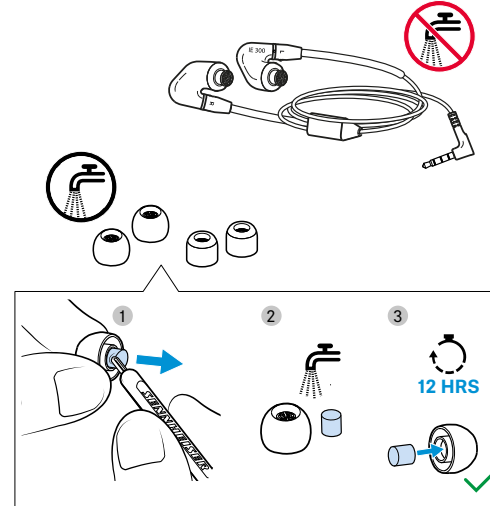


\* Optional available: Balanced stereo cable with 2.5 mm or 4.4 mm jack connector

4. Hoidmine ja transport | Glabāšana un transportēšana | Laikymas ir transportavimas | Uschování a přeprava | Uchovávanie a preprava | Tárolás és szállítás | Depozitarea și transportarea | Съхранение и транспорт | Shranjevanje in prenašanje | Čuvanje i transport



5. Puhastamine | Tīrīšana | Valymas | Čištění | Čistenie | Tisztítás | Curățarea | Почистване | Čišćenje | Čišćenje



Tehnilised andmed | Tehniskie dati | Techniniai duomenys | Technické údaje | Technické údaje | Műszaki adatok | Date tehnice | Технически данни | Tehnični podatki | Tehnički podaci

Transducer principle	dynamic, extra wide band (XWB)
Transducer size	7 mm
Frequency response	6 Hz to 20.000 Hz
Frequency characteristic	diffuse-field equalized
Ear coupling	In-ear, closed
Impedance	16 Ω
Sound pressure level	124 dB at 1 kHz, 1 Vrms
Total harmonic distortion	< 0.08 % (1 kHz, 94 dB)
Attenuation	-26 dB
Cable	oxygen-free copper cable (OFC), para-aramid reinforced, earhooks TPU-encased
Connector	gold-plated; earbud side: MMCX plug; device side: stereo jack plug, 3.5 mm, unbalanced, 3-pin
Weight (without cable)	approx. 4 g each earbud
Operating temperature	-10 °C to +55 °C
Maximum value of the static magnetic field at the surface	0.9 mT

Pistikukontaktide paigutus | Spraudņu funkcijas | Jungties priskyrimas | Schéma pinů konektoru | Obsadenie zástrčky | Csatlakozókiosztás | Alocarea pinilor | Разпределение на контактите | Dodelitev vtičev | Raspodjela utikača

